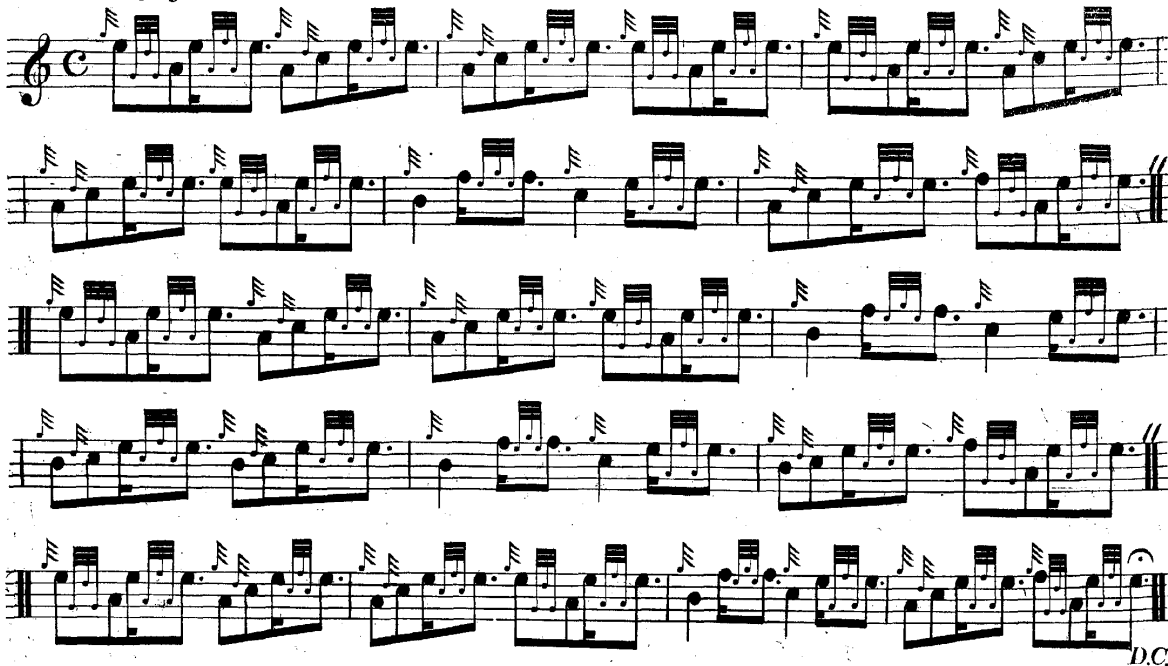
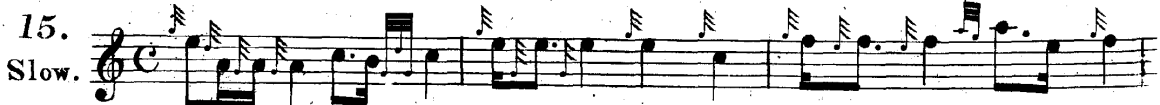


*Doubling of Creanluidh.*



*D.C.*

**FAILTE REISIMEID DUIBH.  
THE BLACK WATCH'S SALUTE.**



48 *1<sup>st</sup> Var:*

Two staves of musical notation in 2/4 time. The first staff begins with a treble clef and a key signature of one flat. The music consists of a series of eighth and sixteenth notes with grace notes, forming a rhythmic pattern. The second staff continues the melody and includes a double bar line with repeat dots.

*Doubling 1<sup>st</sup> Var:*

Two staves of musical notation in 2/4 time, identical to the first variation. It features a treble clef, a key signature of one flat, and a melody of eighth and sixteenth notes with grace notes. The piece concludes with a double bar line and repeat dots.

*2<sup>nd</sup> Var:*

Three staves of musical notation in common time (C). The first staff uses a treble clef and a key signature of one flat. The music is characterized by triplets of eighth notes. The second and third staves continue the piece, with the third staff ending in a double bar line and repeat dots.

*Doubling 2<sup>nd</sup> Var:*

Three staves of musical notation in common time, identical to the second variation. It features a treble clef, a key signature of one flat, and a melody of eighth notes in triplets. The piece concludes with a double bar line and repeat dots.

*Taorluith 3<sup>rd</sup> Var:*

Two staves of musical notation in 6/8 time. The first staff uses a treble clef and a key signature of one flat. The music consists of eighth and sixteenth notes with grace notes. The second staff continues the melody and ends with a double bar line and repeat dots.



*Doubling 3<sup>rd</sup> Var.*



D.C.

*Creanluidh.*



*Doubling of Creanluidh.*



D.C.