

44

# PIOBAIREACHD INORNEISH.

## THE INVERNESS PIOBAIREACHD.

14.  
Moderate.

The main piece is written in treble clef with a common time signature (C). It consists of five systems of two staves each. The melody is highly rhythmic, featuring many beamed eighth and sixteenth notes, and frequent accidentals (sharps and naturals). The piece concludes with a double bar line.

*Thumb Var.*

The 'Thumb Var.' section is written in treble clef with a common time signature (C). It consists of five systems of two staves each. The melody is simpler and more rhythmic than the main piece, featuring fewer accidentals and more regular intervals. It concludes with a double bar line.

*1st Var.*

The '1st Var.' section is written in treble clef with a common time signature (C). It consists of two systems of two staves each. The melody is the simplest of the three, featuring a very regular, almost square-note pattern with minimal accidentals. It concludes with a double bar line.

The first section consists of two staves of musical notation. The top staff is in treble clef and the bottom staff is in bass clef. Both staves contain a sequence of eighth notes with beams, starting on a G4 and descending to a G3. The notation includes various rhythmic markings such as slurs and accents.

*Doubling 1<sup>st</sup> Var.*

The 'Doubling 1<sup>st</sup> Var.' section consists of six staves of musical notation. The first staff is in treble clef, and the following five staves are in bass clef. The music features a complex rhythmic pattern of eighth notes with beams, often grouped in pairs or fours. The notation includes many slurs and accents, indicating a fast and intricate piece.

*Trebling 1<sup>st</sup> Var.*

The 'Trebling 1<sup>st</sup> Var.' section consists of five staves of musical notation. The first staff is in treble clef, and the following four staves are in bass clef. The music features a complex rhythmic pattern of eighth notes with beams, often grouped in pairs or fours. The notation includes many slurs and accents, indicating a fast and intricate piece.

46 2<sup>nd</sup> Var:

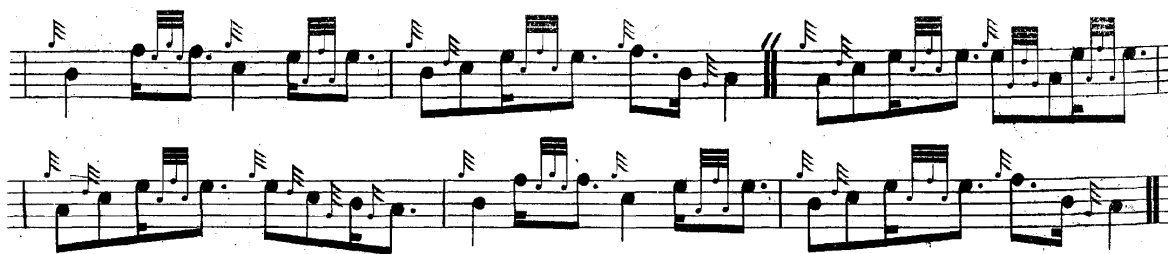
Musical score for the 2<sup>nd</sup> Variation. It consists of five systems of music, each with a treble clef and a common time signature. The music features a complex rhythmic pattern with many triplets, indicated by a '3' in a circle below the notes. The notes are primarily eighth and sixteenth notes, often beamed together. The piece concludes with a double bar line.

Doubling 2<sup>nd</sup> Var:

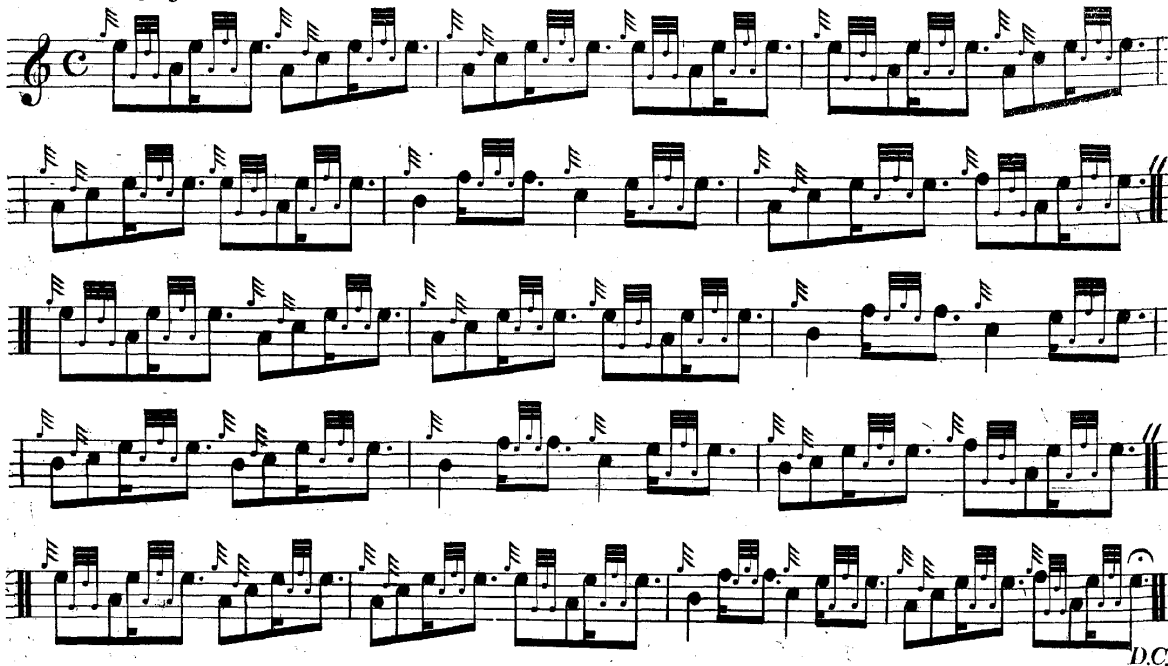
Musical score for the Doubling 2<sup>nd</sup> Variation. It consists of five systems of music, each with a treble clef and a common time signature. The music is a more intricate version of the first variation, featuring a dense texture of triplets and sixteenth notes. The piece concludes with a double bar line and the initials 'D.C.' (Da Capo).

Creanluidh.

Musical score for 'Creanluidh'. It consists of three systems of music, each with a treble clef and a common time signature. The music is characterized by a steady eighth-note rhythm with frequent sixteenth-note accents. The piece concludes with a double bar line.



*Doubling of Creanluidh.*



*D.C.*

**FAILTE REISIMEID DUIBH.  
THE BLACK WATCH'S SALUTE.**

