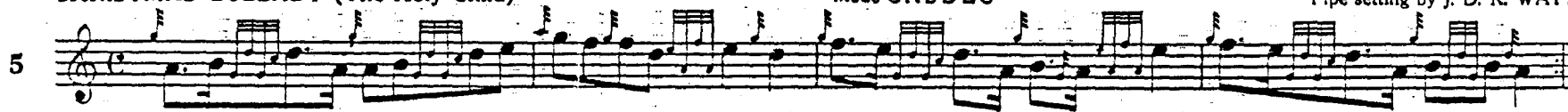


CHRISTMAS LULLABY (The Holy Child)

Mode GABDEG

Suggested by 14th. Century Nuns of Chester Carol
Pipe setting by J. D. R. WATT



VAR. I.



VAR. II.



III. and V. VAR. Taorluath. Crunluath

TT TT TT TT TT TT TT TT TT TT
 CC CC CC CC CC CC CC CC CC CC

IV. and VI. VAR. Taorluath and Crunluath doubling

TT TT TT TT TT TT TT TT TT TT TT TT TT TT TT
 CC CC CC CC CC CC CC CC CC CC CC CC CC CC CC

Abbreviations used

T C

THE FAIRY GLEN (No. 6. in unpublished book of Gestó) (Companion tune to Rory Mor)

Contributed by SIMON FRASER

6
 Old Style Ho dro bie trie Ho dro rad in Ho dro bie trie Hi o ro ro Ho dro bie trie Ho dro ra din
 New Style Ho drie be tre Ho drie ro rin Ho drie Be tre He o ro ro Ho drie be tre Ho drie ro din
 Pat Mor. ve ve

Hie a ho dro Hie ir ir ine Ho dro bi tri Ho dro ro din - bi tri Bie trie hi o ro ro Ho dro bi tri
 He a Ho dro He ir ir in Ho drie bi tri Ho drie ra din bi tri be tre He yo ro ro Ho drie bi tri
 ro rin vi tri

Ho dro rod in bi tri bo dro Hie ir ir ine Ho d-dro Bie trie Hie a ho - dro
 Ho drie ra rin bi tri öd drō Hie ir ir ine Ho drie ve tre He a Hōd - drō
 be tre

Nine final vocable

Suibhal doubling Tor Crun and their doublings in usual wav.